
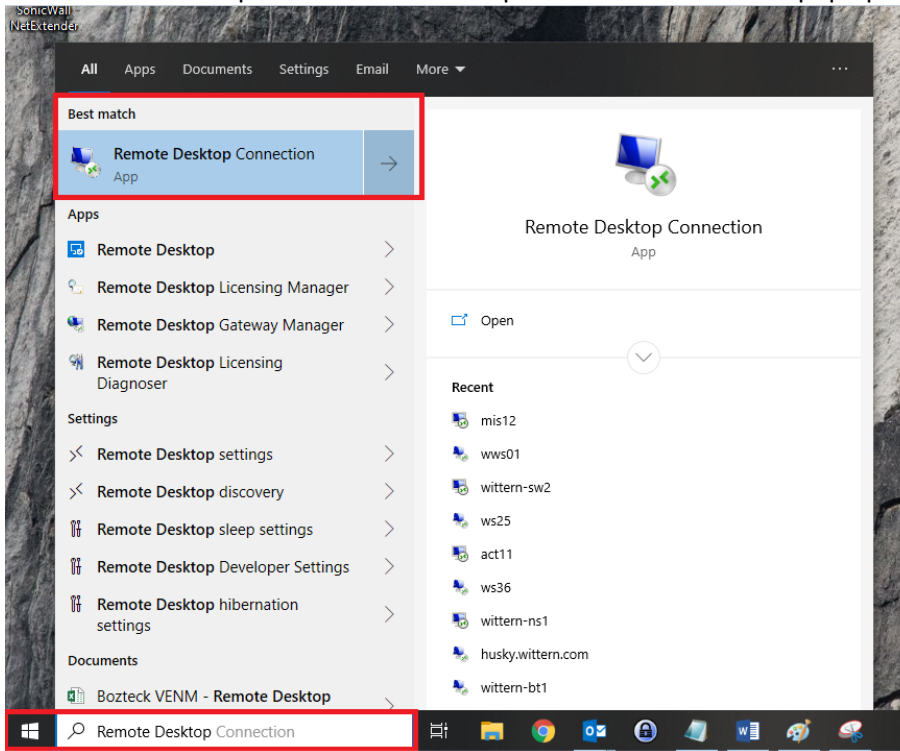


Instructions: Using Remote Desktop Connection (RDP)

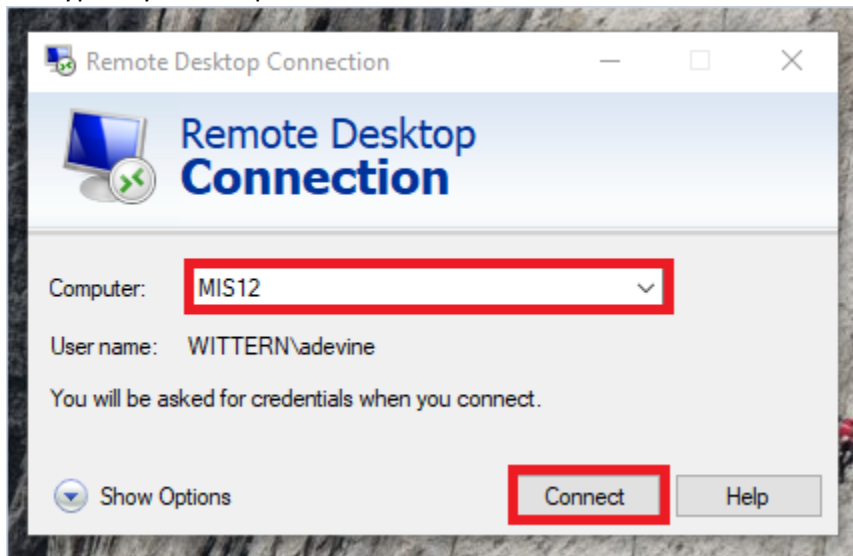
1. Open the **Remote Desktop Connection** app:

- 1a. Left-click the Windows icon  and search for "Remote Desktop Connection".
- 1b. Select the option "Remote Desktop" and a window should pop up.



2. Connect to your computer:

- 2a. Type in your computer name and select "Connect".



Instructions: Using Remote Desktop Connection (RDP)

3. Enter your Windows credentials:
 - 3a. Type in your username "wittern\<enter username here>".
 - 3b. Type in your Windows password.

